



Enlightenment through Academic Rigor Cultural Literacy and Compassion

2021-22

COVID-19 SAFETY PLAN

IN-PERSON INSTRUCTION

This is a working document and information may be subject to changes.

I. Overview

We look forward to welcoming back our students for full day 5-day in-person instruction for the 2021-22 school year. Families needing an alternative virtual program for their children, ICS will offer independent study program.

This document continues to evolve and has been revised based on the most updated public health guidance provided by the California Department of Public Health for the purpose of returning to full, in-person learning starting on the first day of school, August 30, 2021, for the 2021-22 school year. The Safety plan is comprehensive and continues to be fluid, focused on three priorities:

1. Keep students, staff, and the community safe through strong health and safety protocols grounded in California Department of Public Health's guidance;
2. Be responsive to the needs of parents who desire a high-quality learning experience for their children, preparing students for success;
3. Provide trainings and support. Timely, frequent communications and transparency with all stakeholders.

*This document was developed with the most current information known at the time and will be updated as new guidance is received.

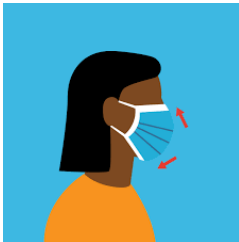
II. SAFETY MEASURES

The health and safety of our students, staff, and families is the top priority when implementing in-person instruction. We will continue to implement health and safety protocols in alignment with the California Department of Public Health's (CDPH) *COVID-19 Public Health Guidance for K-12 Schools in California, 2021-22 School Year*. That document can be found [here](#).

The foundational principle of this guidance is that all students must have access to safe and full in-person instruction and to as much instructional time as possible. In California, the path to safe and full in-person instruction and minimizing missed school days in an ongoing basis, universal masking enables no minimum physical distancing, allowing all students access to full in-person learning, keeping students in school. Recent evidence indicates that in-person instruction can occur safely without minimum physical distancing requirements when other mitigation strategies (e.g., masking) are fully implemented. This is consistent with [CDC K-12 School Guidance](#).

1. MASKS

Per CDPH, masks are one of the most effective and simplest safety mitigation layers to prevent in-school transmission of COVID-19 infections and to support full time in-person instruction.



- All students are required to mask indoors, with exemptions per CDPH face mask guidance. Adults are required to mask when sharing indoor spaces with students.
- Masks are optional outdoors. However, people who are not fully vaccinated are encouraged to wear a mask in crowded outdoor settings or during activities that involve sustained close contact (including high-risk contact sports) with other people who are not fully vaccinated per CDPH.
- “Face covering” means a surgical mask, a medical procedure mask, a respirator, or a tightly woven fabric or non-woven material of at least two layers. A face covering has no visible holes or openings and must cover the nose and mouth. A face covering does not include a scarf, ski mask, balaclava, bandana, turtleneck, collar, or single layer of fabric.
- Persons exempted from wearing a face covering due to a medical condition, must wear a non-restrictive alternative, such as a face shield with a drape on the bottom edge, as long as

- condition permits it. Parents or guardians can work with the site administrator to begin the process to discuss accommodations.
- ICS will continue to implement local protocols to enforce the mask requirements.
- In limited situations where a face covering cannot be used for pedagogical or developmental reasons, (e.g., communicating or assisting young children or those with special needs) staff can use a face shield with a drape (per CDPH guidelines) instead of a face covering while in the classroom as long as the wearer maintains physical distance from others. Staff must return to wearing a face covering outside of this setting.
- Per CDPH, a cloth face covering may be removed for meals, snacks, or when it needs to be replaced.
- Appropriate face coverings and face shields with drapes are available for staff and students. Personal Protective Equipment (PPE) and additional supplies are available.
- CDPH will continue to assess conditions on an ongoing basis, and will determine no later than November 1, 2021, whether to update mask requirements or recommendations.

2. PHYSICAL DISTANCING

- Recent evidence indicates that in-person instruction can occur safely without minimum physical distancing requirements when other mitigation strategies (e.g., masking) are implemented. This is consistent with CDC K-12 School Guidance.
- Per CDPH and Cal/OSHA, physical distancing and desk barriers are no longer a requirement. When masks need to be removed while eating or drinking, ICS will maximize physical distance as much as possible.

3. VENTILATION RECOMMENDATIONS

- Air Conditioning Systems.
- Portable high-efficiency air purification HEPA units are provided in all classrooms and workspaces.

4. RECOMMENDATIONS FOR STAYING HOME WHEN SICK & GETTING TESTED

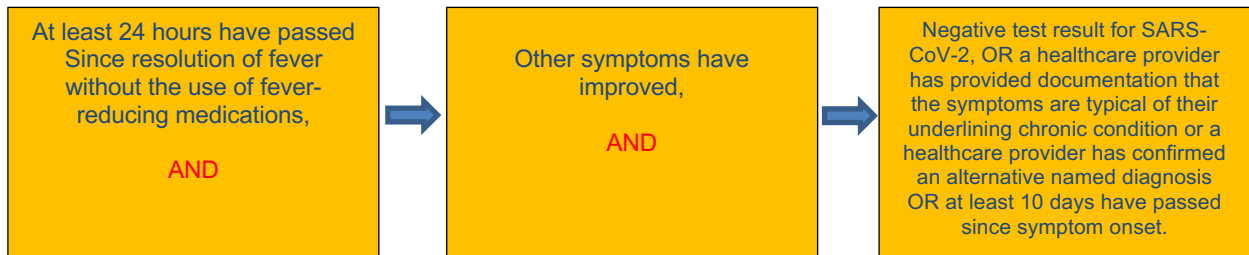
ICS will follow the strategy for Staying Home when Sick and Getting Tested from the CDC.



- Getting tested for COVID-19 when symptoms are consistent with COVID-19 will help with rapid contact tracing and prevent possible spread in school.
- Students, teachers, and staff who have symptoms of infectious illness, such as influenza (flu) or COVID-19, should stay home and be referred to their healthcare provider for testing and care. Staying home when sick with COVID-19 is essential to keep COVID-19 infections out of schools and prevent spread to others. It also is essential for people who are not fully vaccinated to quarantine after a recent exposure to someone with COVID-19.
- City Heights Family Health Center of San Diego across from the school provides FREE COVID-19 Testing. Visit the FHCS website for information: <https://www.fhcsd.org/community-clinic-offers-covid-testing/>

CDPH Return to School Criteria

ICS students and staff with symptoms may not return to campus in person until they have met the CDPH criteria to return to school for those symptoms:



ICS will follow the San Diego County Office of Education Symptom and Isolation Tree.

<https://covid-19.sdcoe.net/portals/covid-19/Documents/Health%20Practices/COVID-19-Decision-Tree.pdf>

5. SCREENING TESTING/ RECOMMENDATIONS

ICS will ensure that students and staff who have symptoms of COVID-19 or have been exposed to someone with COVID-19 are referred for testing.

FHCSD provides FREE COVID-19 Testing throughout San Diego County. Visit the FHCSD for information. <https://www.fhcsd.org/community-clinic-offers-covid-testing/>

ICS will also provide free testing information to students and staff that are offered by community organizations and the San Diego County Health Care Agency.

6. CASE REPORTING, CONTACT TRACING & INVESTIGATION

If a positive COVID-19 case occurs at a school site, ICS liaison will contact public health to report the case to investigate and initiate contact tracing immediately, and the ICS COVID-19 Designee will coordinate a response with San Diego County Health COVID Safe Schools Response Team. ICS staff will notify students, staff, and families who have been identified as a close contact and potentially exposed to COVID-19 and provide health recommendations and guidance from the health agency.

ICS COVID-19 Designee will report the case to the health care agency within 24 hours.

Schools are authorized under the Family Educational Rights and Privacy Act (FERPA) to disclose personally identifiable information without parental consent to local health departments regarding COVID-19 testing and cases. Due to privacy and confidentiality issues, details of positive cases will not be disclosed to the public.

ICS COVID-19 Liaison:

Abdi Mohamud, School Operations Manager
(619) 265-2411 x 3065 Mohamud@iftincharter.net

ICS COVID-19: Bulletin: ICS is committed to providing accurate and transparent information regarding COVID-19 information and update including cases on its school campuses, while also maintaining privacy and confidentiality for students and staff.

7. QUARANTINE RECOMMENDATIONS

For Vaccinated Close Contacts

For individuals who are vaccinated, ICS follows the [CDPH Fully Vaccinated People Guidance](#) regarding quarantine.

8. QUARANTINE RECOMMENDATIONS

For unvaccinated students for exposures when both parties were wearing a mask, as required.

ICS will follow the quarantine process established by CDPH guidance in conjunction with consultation from the local health care agency.

When both parties were wearing a mask in any school setting in which students are supervised by school staff (including indoor or outdoor school settings, including on buses operated by public and private school systems), unvaccinated students who are close contacts (more than 15 minutes over a 24-hour period within 0-6 feet) may undergo a modified quarantine as follows. They may continue to attend school for in-person instruction if they:

- ✓ Are asymptomatic;
- ✓ Continue to appropriately mask, as required;
- ✓ Undergo at least twice weekly testing during the 10-day quarantine; and
- ✓ Continue to quarantine for all extracurricular activities at school, including sports, and activities within the community setting

9. QUARANTINE RECOMMENDATIONS

For unvaccinated student close contacts who were not wearing masks or for whom the infected individual was not wearing a mask during the indoor exposure; or unvaccinated students.

ICS will follow the quarantine process established by CDPH guidance in conjunction with consultation from the local health care agency.

For these contacts, those who remain asymptomatic, meaning they have NOT had any symptoms, may discontinue self-quarantine under the following conditions:

- Quarantine can end after Day 10 from the date of last exposure without testing; OR
- Quarantine can end after Day 7 if a diagnostic specimen is collected after Day 5 from the date of last exposure and tests negative.

To discontinue quarantine before 14 days following last known exposure, asymptomatic close contacts must:

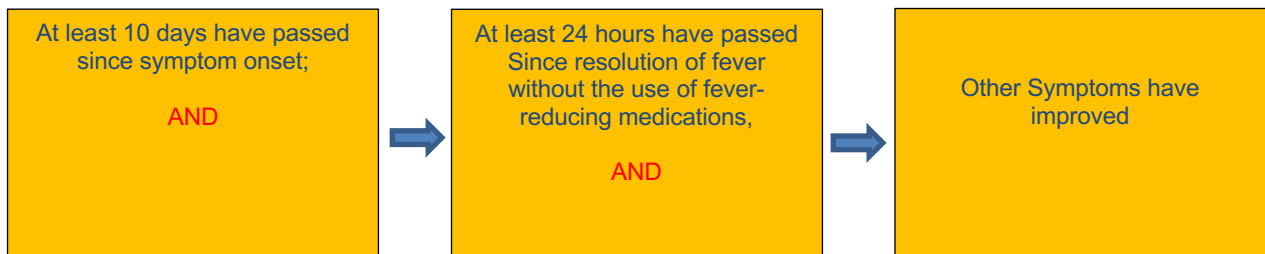
- i. Continue daily self-monitoring for symptoms through Day 14 from last known exposure;
AND
 - ii. Follow all recommended non-pharmaceutical interventions (e.g., wearing a mask when around others, hand washing, avoiding crowds) through Day 14 from last known exposure.
- b. If any symptoms develop during this 14-day period, the exposed person must immediately isolate, get tested and contact their healthcare provider with any questions regarding their care.

10. ISOLATION RECOMMENDATIONS

For both vaccinated and unvaccinated persons, ICS will follow the [CDPH Isolation Guidance](#) for those diagnosed with COVID-19.

Isolation- Symptomatic

CDPH recommends a symptom-based strategy to determine the duration of isolation for people with COVID-19 who are **symptomatic**, meaning they have symptoms. Persons with COVID-19 who have symptoms and were instructed to care for themselves at home may discontinue self-isolation under the following conditions:



Isolation- Asymptomatic

For persons with COVID-19 who are asymptomatic, meaning that they have NOT had any symptoms, CDPH recommends that these individuals be instructed to care for themselves at home. They may discontinue isolation under the following conditions:

At least 10 days have passed since the date of the first positive COVID-19 diagnostic test.

If they develop symptoms, then the strategies for discontinuing isolation for symptomatic should be used.

11. HAND HYGIENE RECOMMENDATIONS

Students and staff are instructed and reminded in proper handwashing & sanitizing techniques, and to avoid contact with one's eyes, nose, and mouth, and covering coughs and sneezes. Handwashing/sanitizing will be required throughout the day: upon arrival to school, before and after recess, lunch, PE, and when returning to class from any shared area and in class as needed.



- Students and staff are reminded to wash their hands for 20 seconds with soap, rubbing thoroughly after application.
- Students may bring a personal hand sanitizing bottle for their personal use.
- Sanitizing stations have been installed in all classrooms and shared school spaces alcohol-based hand sanitizers.
- Additional custodial staff has been hired to assist with the cleaning of frequently touched objects.
- All employees are encouraged to keep their work spaces clean, and teachers teach the habit of cleanliness to students.

12. CLEANING RECOMMENDATIONS

- Cleaning and Disinfecting all areas of the facility.
- Classrooms are thoroughly cleaned daily.
 - If a facility has a sick person with COVID-19, ICS will clean AND disinfect the spaces occupied by that person during that time.
- Custodial staff and any other workers who clean and disinfect are equipped with proper personal protective equipment, including gloves, eye protection, respiratory protection, and other appropriate protective equipment as required by the product instructions.

13. FOOD SERVICE RECOMMENDATIONS

- ICS will maximize physical distance as much as possible while eating.
- ICS Food Services will clean frequently touched surfaces. Surfaces that come in contact with food should be washed, rinsed, and sanitized before and after meals. Food Services staff will continue to wear masks when cooking and preparing meals for cafeteria service.
- Given very low risk of transmission from surfaces and shared objects, there is no need to limit food service approaches to single use items and packaged meals per CDPH.
- Student Breakfast will be served from the cafeteria starting at 7:30am. Please visit your child's school website for information about your child's lunch schedule.

14. VACCINATION/VERIFICATION

Vaccination Mandate

ICS employees must verify vaccine status. **Unvaccinated** or incompletely vaccinated employees are **required to undergo** diagnostic screening testing at least once a week.

ICS will refer to the CDC vaccine verification recommendations.

Cal/OSHA and CDPH assert that vaccination is effective at preventing COVID-19, protecting against both transmission and serious illness or death. CDPH strongly recommends the COVID-19 vaccination for all eligible people in California, including teachers, staff, students, and adults.

To access vaccination opportunities, visit

https://www.sandiegocounty.gov/content/sdc/hhsa/programs/phs/community_epidemiology/dc/2019-nCoV/vaccines.html

Free COVID-19 vaccines are available in various settings.

15. COVID-19 SAFETY PLANNING

In order to build trust in the school community and support successful return to school, ICS provides transparency to the school community regarding the school's safety plans. ICS's safety plan is posted on the district website, communicating the safety measures in place. Trainings are provided to staff and parents by the School's COVID-19 Designees and site administrators.

THIS DOCUMENT SERVES AS THE COVID-19 SAFETY PLAN.

ADDITIONAL CONSIDERATIONS

VISITOR RECOMMENDATIONS

ICS is proud of our connection with families, and we wish to emphasize an interest in creating family engagement opportunities when safe to do so.

Visitors are individuals who need to enter a school office for a clear, temporary purpose such as registering a child for school, picking up a child, or another specific purpose or attending a meeting.

All visitors are required to wear a mask while on school grounds.

ICS encourages parents to conduct as much business as possible through phone, email or zoom. IEPS and parent conferences are encouraged through zoom meetings when possible.

Invited Visitors are individuals whom the school has invited to be on campus for a specific purpose. Invited visitors will be limited, and must be approved by the site administrator.

Volunteers: A volunteer is an individual who applies for the opportunity to be a school/classroom volunteer (more frequent and longer time at the site). As we start the year, approved volunteers to serve as volunteers for outdoor activities with approval from site administrator.

All volunteers must complete the following **prior** to service:

- ✓ Complete the ICS Volunteer application.
- ✓ Review all protocols.
- ✓ Complete a Vaccine Attestation or Weekly COVID-19 diagnostic testing.
- ✓ Agree to wear a face covering while on district property, when indoors.
- ✓ Comply with all school protocols.

OTHER INFORMATION

In addition to the guidance provided, ICS continues the following practices for our school community.

HOME WELLNESS SCREENER

Monitoring the health and wellbeing of our students at home is key to keeping our school community safe.

COVID-19, per CDC guidelines. Having these symptoms is not, in and of itself a diagnosis of COVID-19. Families are encouraged to seek a medical opinion if their children exhibit these symptoms: fever, cough, shortness of breath or difficulty breathing, fatigue, muscle or body aches, headache, new loss of taste or smell, sore throat, congestion or runny nose, nausea or vomiting, diarrhea.

To conduct a wellness screening, you may take your child's temperature before sending them to school and screen for symptoms and exposure to COVID-19. Anyone with a fever of 100.4 degrees Fahrenheit or higher or with symptoms associated with COVID-19 should not go to school.

In addition, if someone is showing any signs of COVID-19, CDC advises individuals to seek emergency medical care immediately: trouble breathing, persistent pain or pressure in the chest, new confusion, inability to wake or stay awake, bluish lips or face. This list does not include all possible symptoms. CDC will continue to update this list as we learn more about COVID-19:

<https://www.cdc.gov/coronavirus/2019-ncov/symptoms-testing/symptoms.html>

ARRIVAL

- ICS will utilize main entry for arrival.
- School begins at 8:00am for all students in the 2021-22 school year.
- All students are required to wear a face mask to enter indoors, and masks are provided to students who need one.

BREAKFAST AT SCHOOL: Students will report to the cafeteria and may arrive as early as 7:30AM.

Please do NOT send children to school earlier than the breakfast time.

DISMISSAL

ICS will utilize multiple points of entry for dismissal.

- Teachers will keep their students in the classroom and monitor until picked-up by parents until 3:30PM. Except Fridays, students will be kept in the classroom until 12:30.
- Remaining students will be brought to the library at 3:30 M-Th, 12:30 on Fridays.

STUDENT DISMISSAL TIMES	
2:50PM	TK-8

Friday Early Dismissal TK-8 @12:15pm

SICK DURING SCHOOL DAY

- **If a student becomes sick during the school day, ICS will follow the Student Symptom Decision Tree provided by San Diego County, and the following steps will be taken:**
 - ✓ Student will be taken to the Sick/Isolation Room to be separated from others, and temperature and symptoms will be evaluated; student will be required to wear a face covering and remain in the isolation area until they are picked up by a parent or guardian immediately unless there is an alternative doctor's note on file for the symptoms, i.e.: allergies, asthma.
 - ✓ ICS students and staff with symptoms may not return to campus in person until they have met the CDPH criteria to return to school for those symptoms. ICS will follow the San Diego County Student Symptom Decision Tree.
- ICS designated a "Well Room" as well as a "Sick/Isolation Room" in the Main Office building. The Health Office will be used as the "Well Room," and other designated space in the Office will be used as the "Sick/Isolation Room."

SCHOOL EVENTS

ICS will continue to review COVID-19 data and conditions to provide opportunities for various school events such as assemblies and field trips in a safe manner.

ICS encourages parents to conduct as much business as possible through phone, email or zoom.

IEPS and parent conferences are encouraged via zoom meetings. For the beginning of the school year until further notice, invited visitors will be limited, and must be approved by a school site administrator.

PERSONAL PROTECTIVE EQUIPMENT (PPE) & OTHER PROTECTIVE GEAR

ICS has procured items that are considered essential equipment to ensure safeguards for staff and students. This includes Personal Protective Equipment (PPE) which is defined as equipment needed by staff to perform their job safely such as face coverings, hand sanitizers, disinfectants, gloves, etc. This also includes adjustments to facilities that respond to the unique needs of the moment.

STUDENT MATERIALS IN THE CLASSROOM

- Basic materials and supplies are provided. Students and staff will wash/sanitize hands before and after sharing materials. Students may bring approved school supplies to school if they choose.
- Students may bring backpacks and lunch bags to school each day.

STUDENT RESTROOMS

- Restrooms are cleaned throughout the day.
- Students are reminded to wash or sanitize hands before and after going to the bathroom, and to wear masks following CDPH's guidance.

DRINKING WATER

- Students are encouraged to use water bottle filling stations at the sites. Students are encouraged to bring their own water bottle to use with the water bottle filling stations.
- Water bottle filling stations are cleaned and sanitized each day.

TRANSPORTATION & FIELD TRIPS



- Masks are required for students and staff on the bus, and extra face coverings are available if needed.
- Health and hygiene are promoted. Students sanitize their hands before boarding the bus.
- Ventilation is provided with open windows as practicable.
- Staff clean and disinfect the interior of the bus after each route.

ADDITIONAL MEASURES

During an outbreak or major outbreak of COVID-19, additional measures and mitigation strategies may be implemented if determined necessary based on hazard assessments.

COVID-19 DESIGNEE

- ✓ Abdi Mohamud, School Operation Manager
(619) 265-2411 x 3065 Mohamud@iftincharter.net

III. REFERENCES & RESOURCES

California Department of Public Health (CDPH), [COVID-19 Public Health Guidance for K-12 Schools in California, 2021-22 School Year](#). Published Aug. 2, 2021.